



Jabfloor 70, 100, 150, 200 and 250

Floor insulation – perimeter floor

Jabfloor is a closed cell expanded polystyrene (EPS) insulation panel for use in all floor constructions.

The thermal performance of a floor is determined by the P/A ratio. For floors with a very low P/A ratio such as 0.25 or lower, the floor may be insulated vertically or horizontally around the external perimeter to achieve the required U value.

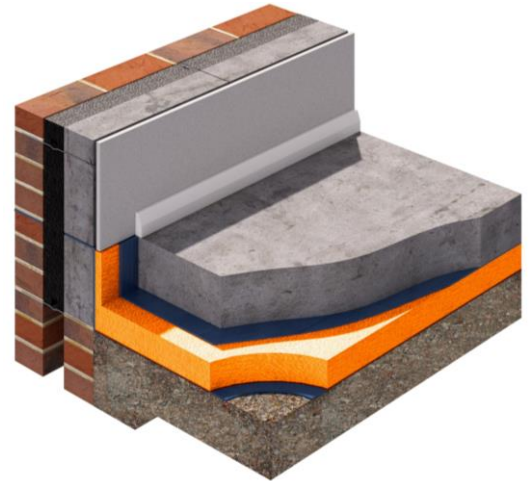
The perimeter insulation is generally applied in a 1200mm wide strip. (see installation details)

Available in a range of compressive strengths to suit building types from domestic to industrial.

Jabfloor HP does not degrade when placed in high moisture areas and is resistant to the effects of freeze thaw. Jabfloor will remain an effective insulation for the life of the building.

Jabfloor insulation has been tested and approved by the British Board of Agrément (BBA) as Jablite Floor Insulation 70, 100 and 150. Certificate number 87/1796

Jabfloor is lightweight and easy to install. There are no requirements for special PPE when installing or cutting Jabfloor. (full installation details are shown later)



Dimensions

Standard Size	2400 x1200mm
Standard Thickness	25, 30, 40, 50, 60, 75, 100, 120, 150 and 200mm (Other thicknesses available to order)

Properties :

Grade	Thermal Conductivity (Lambda) (W/mK)	Design load at 1% nominal compression (kPa)	Design load at 10% nominal compression (kPa)
Jabfloor 70	0.038	20	70
Jabfloor 100	0.036	45	100
Jabfloor 150	0.035	70	150
Jabfloor 200	0.034	90	200
Jabfloor 250	0.034	100	250

More detailed physical properties are shown on our EPS Datasheet.





Application : This information is provided as guidance only please refer to the Jabfloor compressive strengths table.

Grade	Application
Jabfloor 70	Domestic
Jabfloor 100	Offices, Special Occupancy Residential (e.g. Care Home)
Jabfloor 150	Public, Government and Educational Buildings
Jabfloor 200	Industrial and Commercial
Jabfloor 250	Industrial, Cold Store, Heavy Commercial

Accreditation :

BBA	Jabfloor Insulation has been assessed and approved by the British Board of Agrément as Jablite Floor Insulation for use below slab in solid ground floors. Certificate number 87/1796. This Certificate covers Grades 70, 100 and 150.
NHBC Approved	NHBC accepts the use of Jablite HP Floor Insulation, provided it is installed, used and maintained in accordance with the BBA Certificate, in relation to NHBC Standards, Chapters 5.1 Substructure and ground bearing floors and 5.2 Suspended ground floors
CE marking	Jablite have taken the responsibility of CE marking the product in accordance with harmonised European Standard BS EN 13163 : 2012. Declaration of Performance is available on Request.
Quality	All Jablite products are manufactured in production facilities which are certified to ISO 9001 Quality Management
Environmental Responsibility	All Jablite manufacturing facilities are ISO 14001 certified. We operate an Environmental Management System which includes our supply chain (see BREEAM section for more information)
Compliance	Jabfloor conforms to the required properties as defined in BS EN 13163:2012 – Thermal insulation products for buildings – Factory made expanded polystyrene (EPS) products – Specification. This includes compliance with BS 3837 Part 1
Fire	<p>Solid ground floors are not required to provide fire resistance. When properly installed Jabfloor is fully protected by the concrete slab and will have no adverse effect on the fire performance of the building into which it is installed.</p> <p>Jabfloor is supplied as non-flame retardant material as standard.</p>





Environment and Sustainability :

A+	Jabfloor insulation is manufactured from EPS (expanded polystyrene) which achieves an A+ rating in the BRE Green Guide to Specification.
Climate Change	<p>Jabfloor insulation has an ozone depletion potential (ODP) of zero and a global warming potential (GWP) of less than 5.</p> <p>EPS does not create any known risk to the environment</p>
100%	Jabfloor insulation is 100% recyclable.
BREEAM	<p>Responsible Sourcing.</p> <p>Jablite insulation products are manufactured in factories which are ISO 14001 and ISO 9001 certified Jablite purchases raw material from suppliers who are ISO 14001 certified. The ISO certificate are in the Technical Resource Centre on the Jablite website www.Jablite.co.uk</p> <p>Key Process (Insulation Manufacture) ISO 14001: Certificate Number EMS 559414</p> <p>Supply Chain Processes (supply of materials for end products) ISO 14001: Certificate Number NL 015213-1</p> <p>Embodied Impact Jablite EPS is manufactured using low energy processes.</p> <p>The calculation of embodied impact relative to thermal performance is a function of the material volume (for each build), its BRE Green Guide Rating and its thermal conductivity.</p> <p>The thermal conductivity of our products is available on both the product packaging and this datasheet</p>
Biological Properties	<p>Jabfloor EPS insulation is non-toxic and non-biodegradable.</p> <p>Jabfloor will not sustain mould growth and has no nutrient value to insects or vermin.</p>





INSTALLATION

Horizontal-edge insulation

The site hardcore should be blinded level, with a suitable recess provided at the perimeter to receive the Jabfloor.

Jabfloor should be loose-laid over the prepared surface; all joints should be tightly butted.

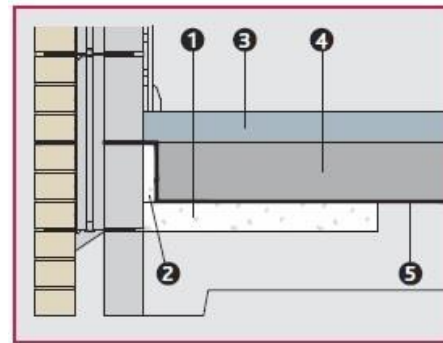
A suitable DPM such as 250 μ (1000 gauge) polythene is installed over the prepared ground or blinded hardcore base.

If the concrete slab is to be poured directly onto the Jabfloor, the joints should be covered with 75mm-wide adhesive tape to prevent the ingress of concrete or grout between the boards.

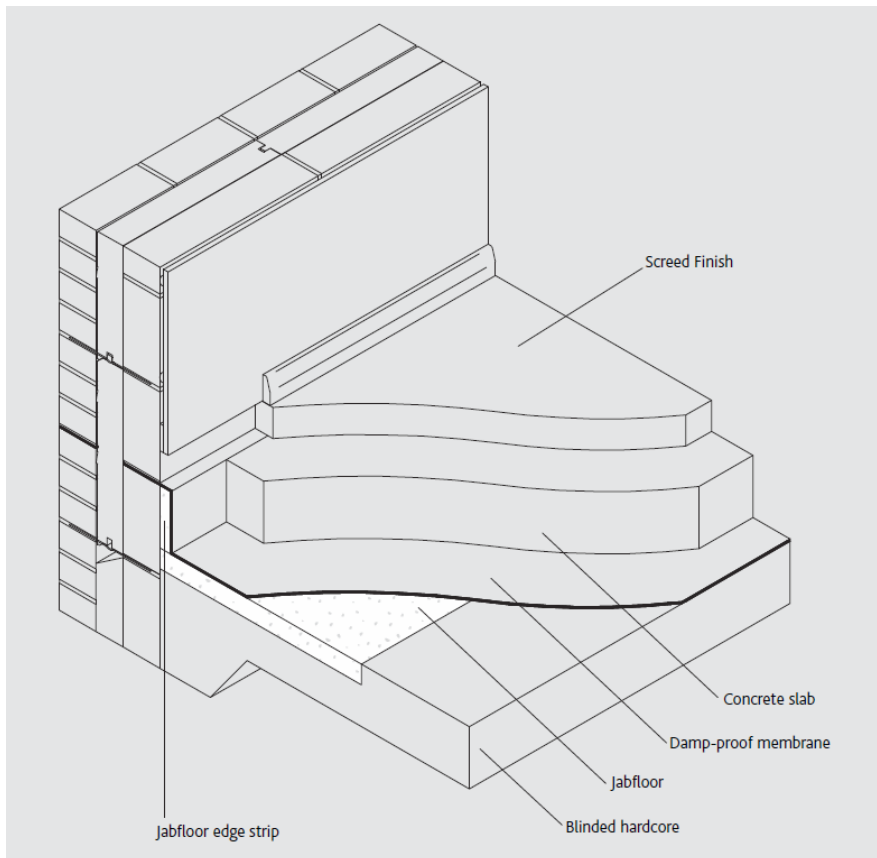
The concrete slab is laid to the required thickness and either tamped or power-floated to provide the required finish.

During these operations, the surface of Jabfloor or the DPM should be protected from impact damage or excessive trafficking by the use of spreader boards.

Horizontal insulation



1. Jabfloor
2. Jabfloor edge strip
3. Screed
4. Concrete slab
5. Damp-proof membrane





INSTALLATION

Vertical edge insulation

Vertical insulation is normally installed on the internal face of the foundation walls, and should be placed during construction so that the insulation board is supported on the concrete footings.

The boards should be adequately restrained against the wall during backfilling. A DPM should be placed between the insulation and the ground.

Jabfloor 70 grade is generally used for vertical applications due to minimal load on the insulation.

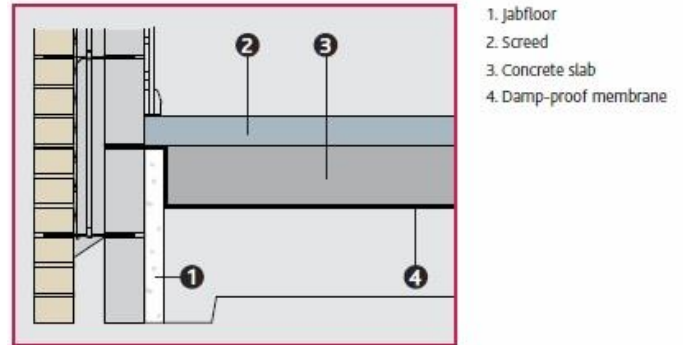
The DPM and insulation should be protected from mechanical damage during backfilling operations and whilst backfilling and when the concrete slab is being poured.

Thermal Bridging

The cavity wall insulation should be continued below the level of the damp-proof course and a vertical upstand of Jabfloor Edge Strip should be used to prevent cold bridging, as detailed in BRE Report 262.

The cavity wall insulation must overlap the top of the Jabfloor Edge Strip by at least 150mm to meet the BRE recommendations and reduce the risk of condensation by cold bridging.

Vertical insulation



Note: Jablite EPS products are compatible with all common building materials. Direct contact with hydrocarbons and strong solvents should be avoided. A suitable membrane such as polythene sheet may be used to separate Jablite EPS from these substances.